

unifrog

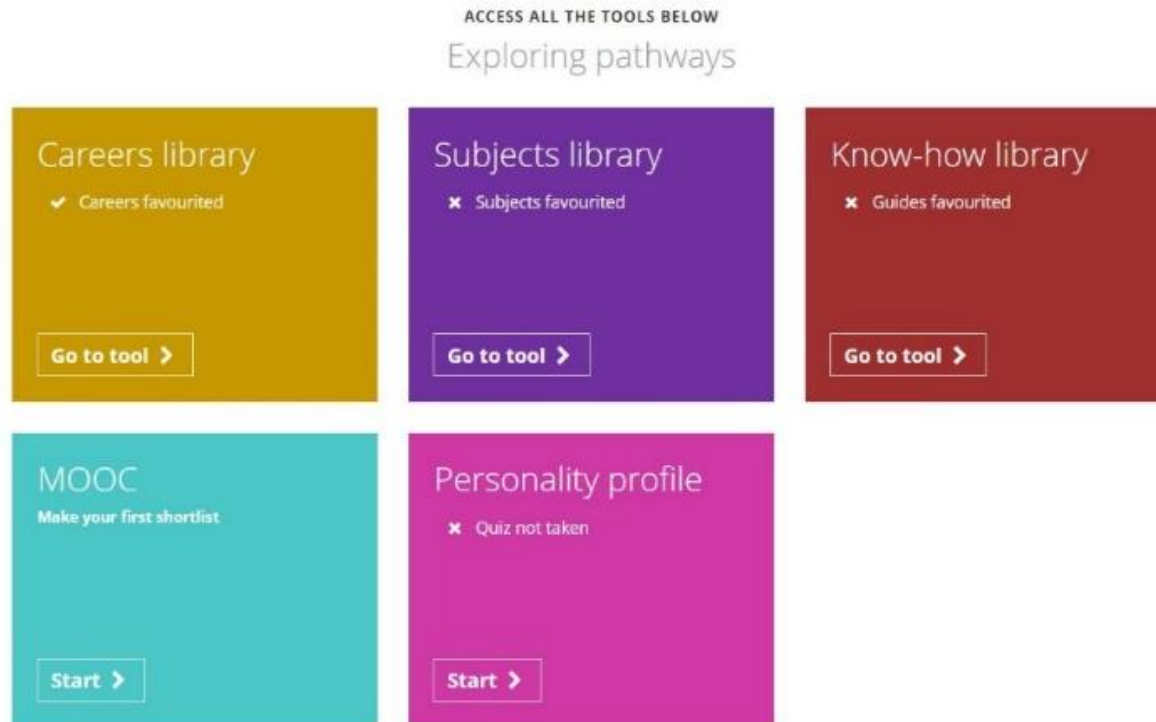
Personality profile

Unifrog personality profile – What is it?

This tool has been created based on the Myers-Briggs type indicator. The framework was created using four different scales and your personality type will be dependent on where you sit on these scales.

Using results from the personality quiz, you will then be able to explore careers and subjects most associated with your personality type and even those that you may not have thought of otherwise!

To get started, go to the student side of the platform at unifrog.org/student/home and click 'Start' on the Personality profile.



1 Take the Quiz

2 Explore careers

Unifrog personality quiz

We've tested this quiz on our colleagues and friends, and now we're ready for you to try it! More people taking it means we can make it even better.

Fast and easy

There are 56 questions, and you'll be done in less than 12 minutes.

Be yourself

Answer honestly, and try to use the neutral option as little as possible.

Explore careers

Explore careers commonly associated with your personality type(s).

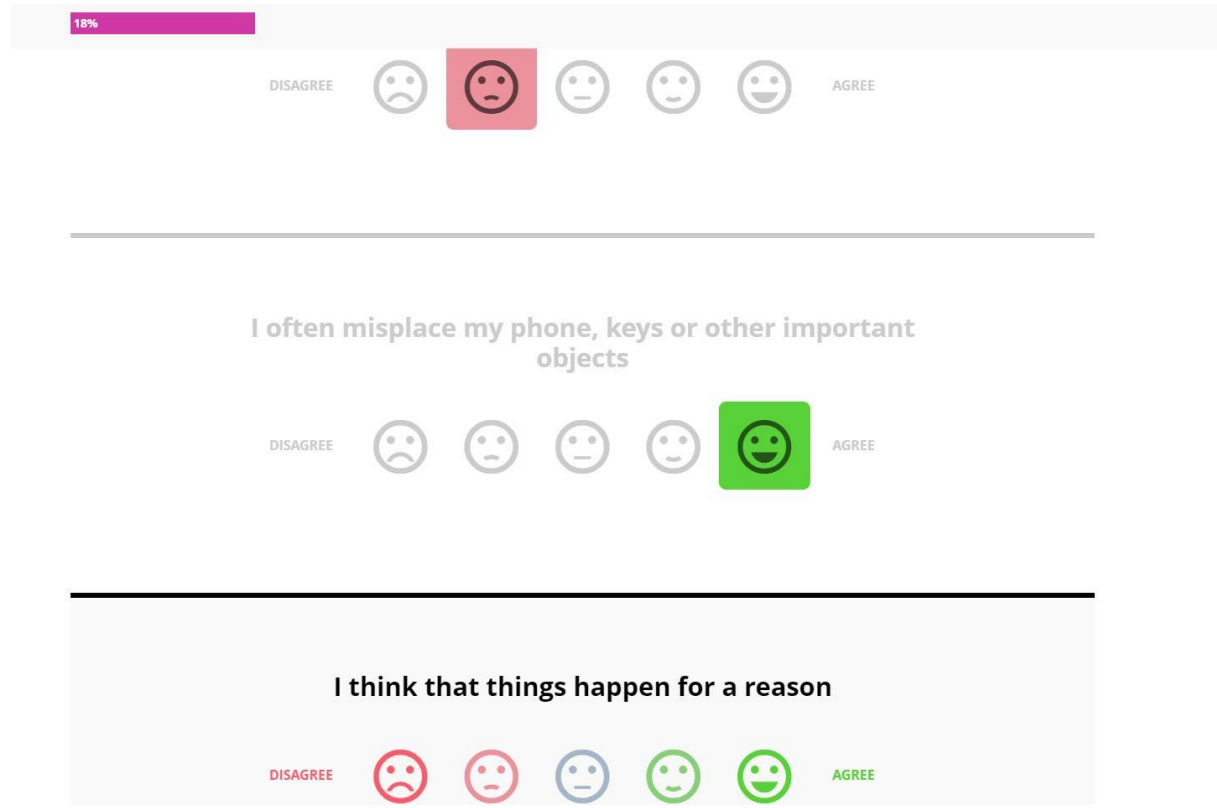
I like making to do lists

DISAGREE



AGREE

You will be asked to answer lots of different questions, with five options to answer ranging from disagree to agree to select from.



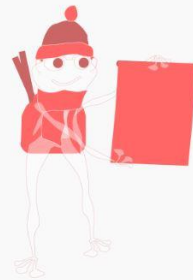
The pink progress bar at the top left hand side will increase as you answer the questions. The bar will continue to increase until you have finished the quiz and reached 100%.

Personality profile

Learn more about yourself and explore the careers commonly associated with your closest personality types

Your closest personality type

Like all of our personality type descriptions, this is an archetype. Depending on where you fall on each of the four scales, you might recognise yourself in more than one type - this can also change as you get older, or even depending on your mood or the situation. Also, two people with the same closest personality type can seem very different depending on things like their environment, values or interests. This description is a fun read that should encourage you to consider your skills from a new angle, and might teach you a few things about yourself - enjoy!



ENFP - Glass frog

Enthusiastic, warm characters, curious about everything and everyone. [More](#)

^


ENFPs are warm, enthusiastic friends who put a lot of effort into their relationships. They love meeting new people because they enjoy the feeling of having a connection with someone. When they do, conversation flows easily - charming and witty with a great sense of humour, ENFPs are happy to talk about any topic with just about anyone, because they are always curious about everything. They can have a passionate discussion no matter what you are talking about, from the best flavour of ice cream to issues of Human Rights.

ENFPs are social and popular but they don't necessarily enjoy the spotlight, and don't naturally tend to take the lead in projects, put on events or plan anything for their friends. They can find the organisational aspect of this type of activity very boring. For example, an ENFP might excitedly suggest having a party, but they are unlikely to be the one to send the invitations and make the playlist, perfectly happy to relax and enjoy their time instead.

Once you have answered the questions, click 'Get your results'. Here, you will be given the closest personality type based on your answers. You will also be given some information e.g. characteristics, a frog type and fun facts!

Other close matches

Because of where you land on the four scales, you might also recognise yourself in these types.



ESFP - Asian painted bullfrog

Popular, exuberant friends who can make anything fun. [More](#) ▾

[Search Careers library for ESFP](#) >

[Search Subjects library for ESFP](#) >

You may also be given other close personality types depending on where you fall within the four Myers Briggs scales. You can read some further information on these too!



Search Careers library for ENFP >

Search Subjects library for ENFP >

You can explore the Careers/Subjects commonly associated with your closest personality types by clicking 'Search Careers library for...', 'Search Subjects library for...'

This will take you directly to the Careers or Subjects library where you can find detailed information on these matched profiles.

1 Start 2 **Filter** 3 Learn

ENFP - Glass frog

< Back

Enthusiastic, warm characters, curious about everything and everyone. Read more about ENFP - Glass frogs on the [Know-how library](#).

- Jump to:
- Administrative and clerical
 - Alternative therapies
 - Animals, plants and land
 - Arts, crafts and design
 - Catering services
 - Construction
 - Education and training
 - Environmental sciences
 - General and personal services
 - Legal services
 - Management and planning
 - Marketing, selling and advertising
 - Medicine and nursing
 - Performing arts, broadcast and media
 - Publishing and journalism
 - Retail sales and customer service
 - Social services
 - Sport, leisure and tourism

Administrative and clerical



Diplomatic service officer

Diplomatic service officers help to promote and protect British interests, businesses and citizens overseas.



Holly Morris
Administration and Production Coordinator
Akademi

unifrog

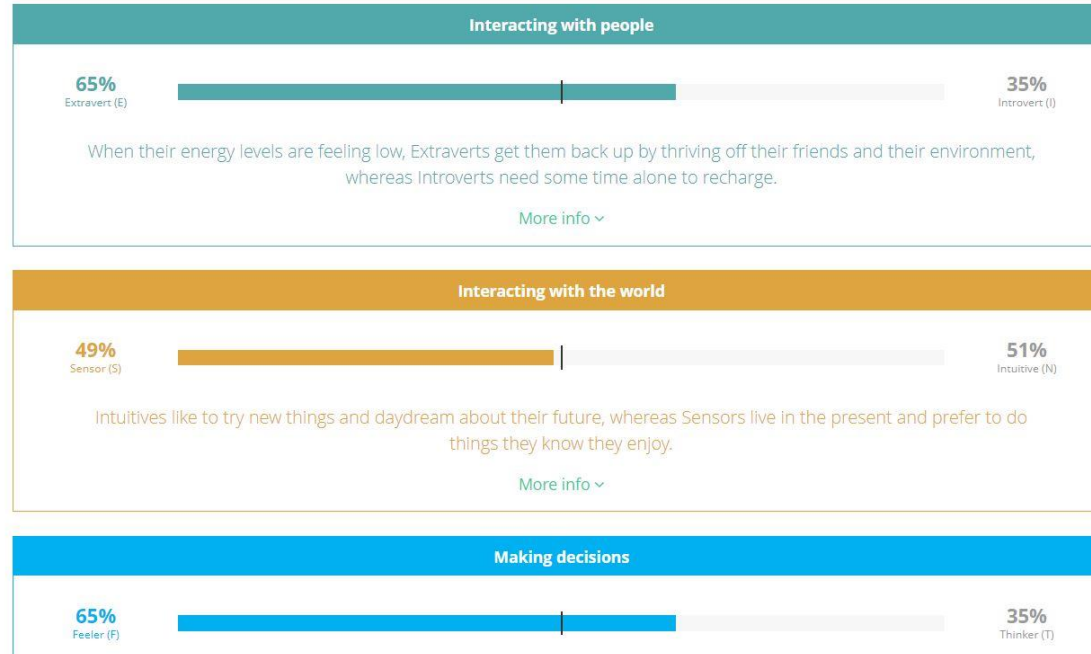
Arts administrator

Arts administrators help to organise events and exhibitions, manage staff, and look after buildings like theatres or museums.

Your results in detail

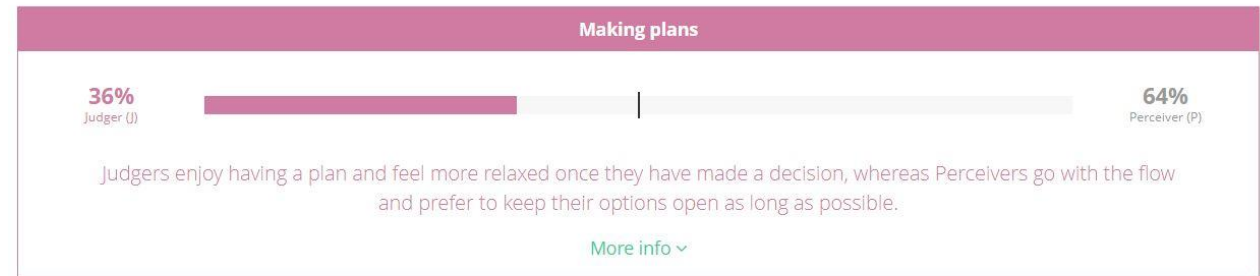
If you've come out as an Extravert, you will probably still identify with some aspects of an Introvert's personality, and this is true for all four of the personality scales - no one falls entirely on one side of a scale. A common analogy is that of your dominant hand: a right-handed person can still use their left hand to do things even if it feels less natural, and it is possible to train yourself to get better with your non-dominant hand. Some people write with their left hand but play tennis right-handed, and some people are fully ambidextrous. It's the same with the four personality scales: although most people have a preference for one side of each scale, everyone uses both.

Here is where you fall on each of the four scales.



Scrolling further, the results are broken down into more detail using the four scales. It will indicate how far along on each scale you sit and provide some additional information i.e. what is an extravert and introvert.

Towards the bottom of this section, you are given the option to learn some more about the theory behind personality testing by clicking the link that takes you directly to the 'Know-how library'.



Learn more about personality testing

Categorising personalities is not new - the ancient Greeks developed a system of understanding the makeup and workings of the human body known as the four humours (black bile, yellow bile, phlegm, and blood), where they believed that the precise balance of each humour explained personality. Our test uses the personality types from the Myers-Briggs Type Indicator®, which was developed by Katherine Cook Briggs and Isobel Briggs Myers in the 1940s by expanding on Carl Jung's theory. We've also matched the types to the profiles in our Careers library. Learn about the theory behind personality testing in the [Know-how library](#) >

Your personality profile can be saved as a PDF to be put into your Locker, or sent to a teacher to have a look at.

The quiz can be done as many times as you want, just follow the link at the bottom of the page!

Share your personality profile:

<https://www.unifrog.org/profile/6e078a> [Q Preview](#)

[f](#) [t](#) [e](#)

Or ask a teacher to take a look:

Miss Scannapieco

[+ add a note](#)

[Send](#)

Download your profile:

Push it to your locker? Store this version of your profile in your locker as a pdf.

[Push to Locker >](#)

Or, [download as PDF Document](#)

Want to take the quiz again?

For the most useful results, we recommend that you only take the quiz every 6 months or so. You've taken the quiz 1 time, and the profile above is based on the last quiz you took which was on 20 January 2020. This means you've got 182 days left to wait!

[Take the quiz again >](#)

By personality type

We've used the personality types from the Myers-Briggs Type Indicator® - if you don't know what yours is, [take our quiz](#) to find out! Of course, any personality type can enjoy and excel at any profession, but the buttons below will take you to the careers most commonly associated with each personality type. You can read more about the personality scales and types on the [Know-how library](#).

Thinkers

INTJ

Original, strategic minds who love to be left alone with an interesting problem.

[See the careers >](#)

INTP

Autonomous thinkers who like to come up with new and original ideas.

[See the careers >](#)

ENTJ

Charismatic characters, forceful when pursuing their ambitions.

[See the careers >](#)

ENTP

Doers

ISTJ

Practical, organised characters who enjoy getting things done the right way.

[See the careers >](#)

ISTP

Independent observers, up for an adventure and good at thinking outside of the box.

[See the careers >](#)

ESTJ

Loyal individuals who get things done and love organising activities with their friends.

[See the careers >](#)

Dreamers

INFP

Gentle daydreamers, happy to live and let live as long as they are free to explore their interests.

[See the careers >](#)

ISFP

Introspective creatives with a strong sense of their personal values, enjoy testing limits.

[See the careers >](#)

ENFP

Enthusiastic, warm characters, curious about everything and everyone.

[See the careers >](#)

Helpers

INFJ

Reserved idealists who become passionate when speaking about topics close to their heart.

[See the careers >](#)

ISFJ

Supportive friends who always remember little details about the people important to them.

[See the careers >](#)

ENFJ

Sociable and engaging characters who inspire their friends to do good.

[See the careers >](#)

Once you have completed the personality quiz your personality type will be highlighted in the Careers and Subject libraries.

Here you can find out some more information about the careers/subjects most commonly associated with your personality type!

unifrog

Sign in at:
unifrog.org/sign-in