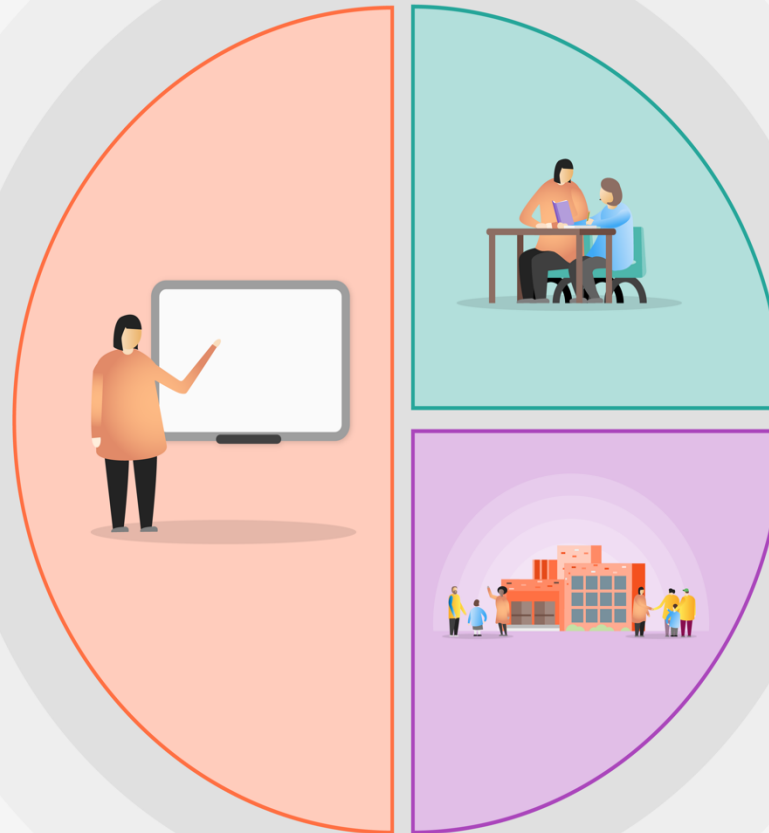


## 1 Teaching

- Focus on Quality First Teaching across Academy
- Frequent low-stakes testing to ensure all students, and in particular disadvantaged students, experience success and celebrate the acquisition of knowledge
- Maintain CPD focus on developing metacognition and the quality of teacher modelling and explanation  
LC: Principles of Instruction / Effective Conditions for Learning / Dual Coding / Retrieval Practice
- Whole school implementation of EEF Metacognition Guidance
- Metacognitive/independent learning
- Whole staff awareness of T&L toolkit (Sutton Trust/EEF)
- Continue to develop feedback between teachers & pupils
- Improving pupil engagement with the curriculum and development of curriculum model Intent, Implementation, Impact
- Mastery homework



## 2 Targeted academic support

- Reading programmes
- Literacy and numeracy interventions
- Provide parents with additional support materials
- Personalised learning hour (Y11)
- National Tutoring Programme – targeted support
- Best use of TAs & cover supervisors
- Collaboration & peer to peer learning strategies
- Impact & Intervention analysis
- Academic mentoring (Y11)

## 3 Wider strategies

- Provide ongoing technical support
- Ensure our most vulnerable pupils have priority access to classroom teaching and online materials
- Ensure pastoral contact home for disadvantaged students also identifies barriers
- Pastoral support programmes
- Improving pupil aspirations
- Attendance team support
- THRIVE programme (Y11)
- SENECA Independent learning programme
- Effective use of Learning Mentors
- Support from ASPMs
- Breakfast club
- Independent Student reflection