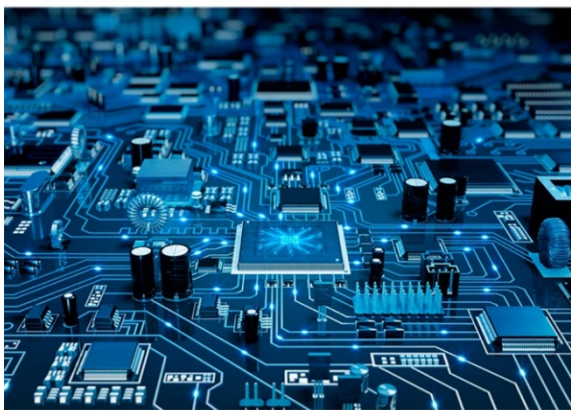


GCSE Design & Technology: Electronics/Systems Specialism

Exam Board: Edexcel

Aim:



This course is aimed at students with a strong interest in electronic products and gives them an insight into our modern technological society as well as allowing them to develop skills and knowledge that are very attractive to future employers. This course should provide an opportunity for pupils to develop and encourage imagination, innovation and flair. They will be encouraged to combine designing and modelling skills to produce outcomes which will be rigorously tested. The promotion of graphics techniques and ICT applications (including CAD) will be encouraged. On successful completion of the course students could move to A Level Design & Technology.

Assessment and Content:

Design Folder (50% - internally assessed)
Written Examination (50% - externally assessed)

Students will undertake a controlled assessment task which is a substantial 'design and make' project. This will focus on four main areas: designing; making; analysing and evaluating. Students will produce a working electronic product alongside a portfolio of evidence and will be encouraged to use a wide and varied range of materials.

Students will also need to explore the following activities in preparation for their controlled assessment and also the written exam at the end of Year 11:

- Explore the work of professional designers and styles and investigate their influences on today's world.
- Designing within a professional context, working within teams and as individuals to solve real problems.
- Work on design briefs bringing together designing and making to promote the development of knowledge and understanding.
- Discover and develop innovation.
- Design and make quality products with a professional finish.
- Understand the application of maths and science in a real setting.

Due to the necessary application of maths and science within the context of this course, students will need to be predicted a GCSE Grade 5 or above in both Maths and Science.

For further information, contact Mr I Craddock

WJEC Level 1/2 Technical Award in Engineering

Exam Board: WJEC

Aims:

Engineering is of paramount importance within the UK, with 20% of the UK's economy coming from the Engineering sector alone. We have a massive shortage of qualified personnel, which is partly down to the lack of awareness within young people of the opportunities it provides. The course is designed to look at a range of Engineering skills, from manufacturing to designing and solving technical problems.



Who is this course suitable for?

This course is suitable for all, with no formal entry requirements. Learners would find the following learning skills and aptitudes helpful: basic proficiency in literacy and numeracy, problem solving, and motivation to work independently.

Content & Assessment:

Unit 1 provides learners with the opportunity to interpret different types of engineering information in order to plan how to manufacture engineering products. Learners will develop knowledge, understanding and skills in using a range of engineering tools and equipment in order to manufacture and test an end product. Internally examined and contributes to 40% of the qualification. There are 20 hours set out to complete the assessment.

Unit 2 allows learners to explore how an engineered product is adapted and improved over time, and it offers learners the opportunity to apply their knowledge and understanding to adapt an existing component, element or part of the engineering outcome that they manufactured for Unit 1. Internally examined and contributes to 20% of the qualification. There are 10 hours set out to complete the assessment.

Unit 3 introduces learners to a range of considerations that impact on engineering design and how modern engineering has had an impact on modern day life at home, work and in society in general. External examination worth 40% of the qualification. There is a final 90-minute examination.

Where can this course lead?

The course would create a great foundation for further study and learners the opportunity to develop a range of specialist and general skills that would support their progression to employment.

For further information, contact Mr I Craddock or Mrs C Lambert

GCSE Design & Technology: Paper and Board Specialism (Graphic Design)

Exam Board: Edexcel

Aim:

This course is aimed at students with a strong interest in graphic design and gives them an insight into our modern technological society as well as allowing them to develop skills and knowledge that are very attractive to future employers. This course should provide an opportunity for pupils to develop and encourage imagination, innovation and flair. They will be encouraged to combine designing and modelling skills to produce outcomes which will be rigorously tested. The promotion of graphics techniques and ICT applications (including CAD) will be encouraged. On successful completion of the course students could move to A Level Design & Technology.



Assessment and Content:

Design Folder (50% - internally assessed)
Written Examination (50% - externally assessed)

Students will undertake a controlled assessment task which is a substantial 'design and make' project. This will focus on four main areas: designing; making; analysing and evaluating. Students will produce a working product alongside a portfolio of evidence and will be encouraged to use a wide and varied range of materials.

Students will also need to explore the following activities in preparation for their controlled assessment and also the written exam at the end of Year 11:

- Explore the work of professional designers and styles and investigate their influences on today's world.
- Designing within a professional context, working within teams and as individuals to solve real problems.
- Work on design briefs bringing together designing and making to promote the development of knowledge and understanding.
- Discover and develop innovation.
- Design and make quality products with a professional finish.
- Understand the application of maths and science in a real setting.

This course will focus on Graphical applications in design and Graphical practical elements to support learning.

For further information, contact Mrs R Pocock

WJEC Level 1/2 Technical award in Hospitality and Catering

Exam Board: WJEC (Vocational)

Aim:

The Technical Award in Hospitality and Catering has been designed to support learners in schools who want to learn about this vocational sector and the potential it can offer them for their careers or further study. It is most suitable as a foundation for further study. This further study would provide learners with the opportunity to develop a range of specialist and general skills that would support their progression to employment.



Structure & Assessment:

The course is assessed using the grades L1 Pass, Merit, Distinction and L2 Pass, Merit, Distinction/* Students will be provided with the opportunity to undertake work related to the following areas of study:

Unit 1: The Hospitality and Catering Industry.

Overview: In this unit learners will gain a comprehensive knowledge and understanding of the hospitality and catering industry including provision, health and safety, and food safety.

Topics: Hospitality and catering provision, how hospitality and catering providers operate, health and safety in hospitality and catering and food safety in hospitality and catering.

Assessment: This unit is externally assessed through a written examination, which contributes 40% to the overall qualification grade.

Duration: 1 hour 20 minutes

Number of marks: 80

Format: short and extended answer questions based around applied situations. Learners will be required to use stimulus material to respond to questions.

Unit 2: Hospitality and Catering in Action.

Overview: In this unit, learners will gain knowledge and understanding of the importance of nutrition and how to plan nutritious menus. They will learn the skills needed to prepare, cook and present dishes. They will also learn how to review their work effectively.

Topics: The importance of nutrition, Menu planning, the skills and techniques of preparation, cooking and presentation of dishes, Evaluating cooking skills

Assessment: This unit is internally assessed through controlled assessment. The assessment contributes 60% to the overall qualification grade.

Students will be expected to bring ingredients every week for practical cooking lessons.
There will be both written and practical exams in both Year 10 and Year 11.

For further information, contact Mrs C Emms, Mrs Tyrrell or Miss E Brown

GCSE Design & Technology: Timber Specialism (Product Design)

Exam Board: Edexcel

Aim:



This course is aimed at students with a strong interest in product design, with a timber focus, and gives them an insight into our modern technological society as well as allowing them to develop skills and knowledge that are very attractive to future employers. This course should provide an opportunity for pupils to develop and encourage imagination, innovation and flair. They will be encouraged to combine designing and modelling skills to produce outcomes which will be rigorously tested. The promotion of graphics techniques and ICT applications (including CAD) will be encouraged. On successful completion of the course students could move on to A Level Design & Technology.

Assessment and Content:

Design Folder (50% - internally assessed)
Written Examination (50% - externally assessed)

Students will undertake a controlled assessment task which is a substantial 'design and make' project. This will focus on four main areas: designing; making; analysing and evaluating. Students will produce a working product alongside a portfolio of evidence and will be encouraged to use a wide and varied range of materials.

Students will also need to explore the following activities in preparation for their controlled assessment and also the written exam at the end of Year 11:

- Explore the work of professional designers and styles and investigate their influences on today's world
- Designing within a professional context, working within teams and as individuals to solve real problems
- Work on design briefs bringing together designing and making to promote the development of knowledge and understanding
- Discover and develop innovation
- Design and make quality products with a professional finish
- Understand the application of maths and science in a real setting.

The course will focus on timber based projects and practical elements to support learning.

For further information, contact Mrs R Pocock

BTEC Level 1/2 Technical Award in Fashion and Textiles

Exam Board: BTEC (Level 1/2 Technical Award)

Aims:

This course is aimed at learners who want to study creative fashion/textiles in a hands-on, practical way. It will help them to develop the knowledge, skills and experience that could open up a pathway to a career in the industry.



Assessment:

Students will be awarded a L1 Pass, Merit, Distinction or L2 Pass, Merit or Distinction/*

Unit 1: Creative Practice in Art and Design (Fashion/Textiles) – Internally assessed and externally moderated

Unit 2: Responding to a Client Brief – externally assessed synoptic task

There is no written exam for this course.

Course content:

Component 1: Creative Practice in Art and Design (Fashion/Textiles)

In this component, you will develop practical research and investigation skills, which will enable you to gain an understanding of how designers produce work for a specific purpose. You will then apply practical ideas-generation techniques and learn how to visualise and record your ideas in different ways. You will develop practical design skills and explore techniques in order to communicate your creative intentions. You will have the opportunity to work across a range of media used in art and design practice. Taking part in workshops and classes, you will develop and practise skills with materials, techniques and processes. Throughout your skills development, you will review your progress and consider how you can make improvements. You will then learn how to communicate your progress and outcomes to show your skills development.

Component 2: Responding to a Client Brief (Fashion/Textiles)

Designers respond to briefs to produce outcomes. They continually think about the requirements of the brief and try alternative approaches during development. Once they have developed and created a response to the brief, they present their work.

In this component, you will interpret a creative brief that is asking you to produce specific art or design work for an identified audience. You will use your skills to understand the constraints and the requirements of the brief. You will use planning and organisation skills to ensure that the work can progress and develop in a structured way. You will ensure that the work meets the requirements of the brief by continually reviewing your work. Finally, you will present the work in an appropriate format, in order to communicate the development of your work and the final response.

For further information, contact Mrs C Emms

WJEC Level 1/2 Technical Award in Construction

Exam Board: WJEC (Vocational)

Aims:

WJEC Level 1/2 Technical Award in Construction offers a learning experience that focuses learning for 14-19 year olds through applied learning, i.e. acquiring and applying knowledge, skills and understanding through purposeful tasks set in sector or subject contexts that have many of the characteristics of real work.

The course will allow you to:

- Gain an understanding of the construction sector and a range of core craft and building services skills.
- Gain confidence in essential construction-based maths and science
- Learn and apply the knowledge, and practise the skills you will need to follow your chosen career or future studies
- Build your confidence, and achieve your full potential in your assessments.



The course introduces students to basic practical trades and provides a good basis to go on to a more advanced work-related qualification.

Structure of the Qualification:

UNIT 1 - 40%

Unit 1 is online, it has 8 sections as follows:

- *The sector*
- *The built environment life cycle*
- *Types of building and structure*
- *Technologies and materials*
- *Building structures and forms*
- *Sustainable construction methods*
- *Trades*
- *Employment and careers*
- *Health and safety*

90 minute exam, 80 marks sat at the end of the course.

UNIT 3 60%

- *Interpreting information to create a structure or product*
- *Set success criteria for standard of workmanship*
- *Prepare for task*
- *Carry out task safely*
- *Remove and dispose of materials*
- *Evaluate task*

Eight areas are available, with only three being studied in depth, from:

Brick, Plastering, Textiles, Carpentry, Electrician, Plumbing, Tiling, and Decorating.

For further information, contact Mr C Lambert, Mr A Willson or Mrs A Wall