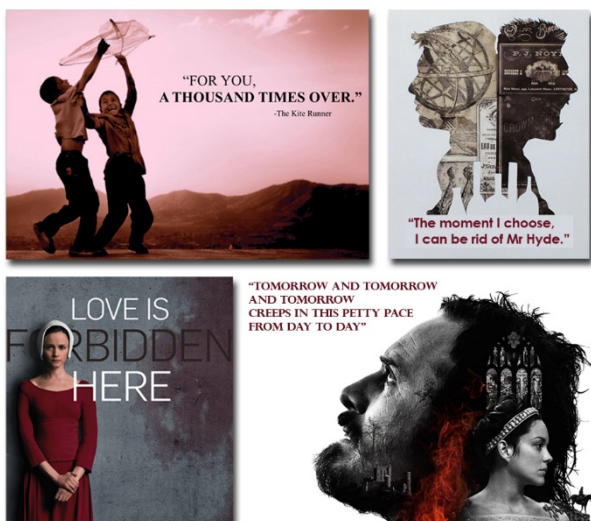


# GCSE English Language and GCSE English Literature

**Exam Board:** AQA



## **Aims:**

GCSE English Language and Literature is the study of how writers communicate their ideas about the world, and how readers might respond to these ideas. It aims to develop a critical understanding of the ways in which literary texts are a reflection of, and exploration of, the human condition, the study of which develops empathic understanding of human nature. Both qualifications aim to enable students to appreciate the different qualities of literary texts (both fiction and non-fiction) and encourage them to develop and present informed, critical responses to the ideas presented. They also aim to enable students to make links between a variety of written texts and between the text and the context within which it was shaped.

## **Course content:**

Over the course you will read and respond to a wide range of texts including:

- Shakespeare's *Macbeth*
- 19th century to present day extracts from fiction and non-fiction
- A collection of poems based on *Worlds and Lives*
- Other poems to develop independent analysis
- *An Inspector Calls*
- *The Strange Case of Dr Jekyll and Mr Hyde* or *A Christmas Carol*

You will also complete a variety of writing tasks for specific audiences and purposes.

## **Structure:**

Year 9	Year 10	Year 11
Issues and Attitudes	<i>Macbeth</i> (for all)	English Language Paper 1 – Explorations in creative reading and writing
Autobiography	<i>Dr Jekyll and Mr Hyde</i> or <i>A Christmas Carol</i>	English Language Paper 2 – Writers' viewpoints and perspectives
Use your words fiction writing	<i>Worlds and Lives</i> poetry anthology	GCSE revision
<i>Romeo and Juliet</i> (Shakespeare practice text)	Spoken Language presentation – this is a separate part of the course where you will be awarded pass, merit or distinction.	
Unseen Poetry		
<i>An Inspector Calls</i> (GCSE text)		

## **Assessment:**

There are two English Language examinations and two English Literature examinations all taken at the end of Year 11. The spoken language endorsement will be completed in Year 10/11 in a dedicated week of presentations.

***For further information contact Mrs C Oakes / Mr M Baldwin***